

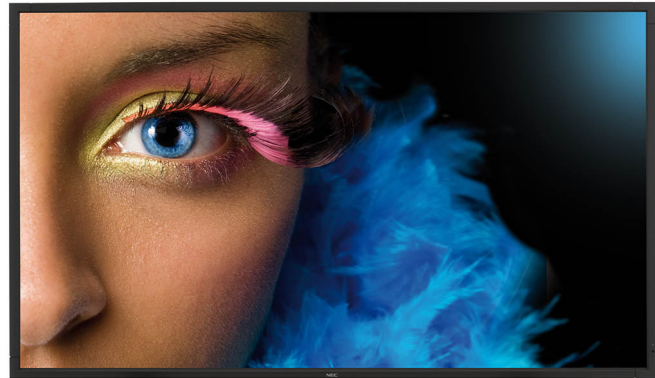
# NEC SpectraView® 552

Order Code: 60003403

NEC LCD 55" Public Display

The SpectraView 552 builds on NEC's highly acclaimed SpectraView Series, with a colour accurate large format public display. The 24/7 proof screen is equipped with a rich and unparalleled feature set, completed by an abundance of interfaces for applications demanding accurate colour reproduction.

The SpectraView 552 is the ideal display for creative professionals in the design, textile, virtual imaging or real-time modelling market segments, who need reliable life-size colour accurate images.



## DELIVERING GENUINE BENEFITS

**Colour Accurate** - the display can be hardware colour calibrated via its 10-bit LUT with SpectraView Profiler PD software (DVI-D and DisplayPorts only, using DDC/CI communication link).

**Consistent Colour Viewing** - with SPVA TFT technology, the display is additionally screened for optimum image uniformity.

**Functionality** - can be extended with additional interfaces and playback devices through the option slot which avoid additional cables and mounting brackets.

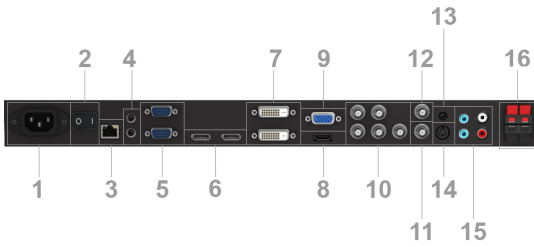
**Life Size Image Reproduction** - the image can offer 1:1 sizing for textile garments, digital posters and virtual modelling or digital prototypes.



*SpectraView*®

## OUTSTANDING PERFORMANCE

- **Uniform and controlled heat management** enables the user to monitor and control the heat inside the display with user controllable fans. Heat management is crucial for larger walls and mission critical installations to secure reliability and longevity.
- **NEC's dual slot technology** allows for the integration of single board computers and other option slot products without the need to stow external equipment.
- **Peace of mind** thanks to full control of the display via LAN with free NEC software and alert emails in the unlikely event of a problem such as no signal, overheating, back light failure etc.
- **Integrated speakers** save installation costs and preserve the clean look of the screen.
- **Daisy chaining** via DVI (max. 9 pieces) and DisplayPort (max. 25 pieces) offering high flexibility at no extra cost if the signal needs to be passed on for videowalls or back-to-back installations



1. Power (AC in)
2. Main switch (on/off)
3. LAN with SNMP
4. Remote Control in / out
5. External control RS-232 in / out
6. DisplayPort in
7. DVI in / out
8. HDMI in
9. RGB in
10. RGB HV in (RGB, Component, Composite)
11. Composite in
12. Composite out
13. Audio out
14. S-Video in
15. Audio in
16. External speaker

**SPECIAL CHARACTERISTICS**

10-bit Look Up table, Advanced fan control, Copy display settings through RS232, DICOM support, Input name adjustment, Mac and Windows compatible, Matrix memory, OSD rotation for portrait mode, PIN as theft protection, Programmable ambient light sensor, Rapid input switching, Scheduler, Screen saver functions, SpectraView Profiler PD software, TileMatrix (10 x 10), User input priority definition, Various picture in picture options



**Energy Efficiency** Ambient light sensor; Carbon savings meter; ECOMode

**Ecological Materials** Optional feet; Manuals on CD

**Ecological Standards** Energy Star 5.1

Technical Specification NEC SpectraView® 552	
<b>DISPLAY</b>	
Panel Technology	S-PVA with CCFL backlights
Active Screen Area (W x H) [mm]	1,209.6 x 680.4
Screen Size [inch/cm]	55 / 138.8
Aspect Ratio	16:9
Brightness (shipping) [cd/m <sup>2</sup> ]	500, (700 max)
Contrast Ratio (typ.)	4000:1
Viewing Angle [°]	178 horizontal / 178 vertical (typ. at contrast ratio 10:1)
Colour Gamut Size / Coverage	75% / 75% Adobe RGB
Colours [Mio.]	16.77 (8-bit per colour)
Response Time (typ.) [ms]	8 (grey-to-grey)
Panel Refresh Rate [Hz]	60
<b>SYNCHRONISATION RATE</b>	
Horizontal Frequency [kHz]	31.5 - 91.1 (analog and digital)
Vertical Frequency [Hz]	25.2 - 85
<b>RESOLUTION</b>	
Native Resolution	1920 x 1080 at 60 Hz
Supported on digital and analogue inputs (PC)	1024 x 768; 1280 x 1024; 1280 x 720; 1280 x 768; 1280 x 800; 1280 x 960; 1366 x 768; 1400 x 1050; 1600 x 1200; 1680 x 1050; 1920 x 1080; 640 x 480; 720 x 400; 720 x 576; 800 x 600
Supported on digital inputs (Video)	1280 x 720p (50)16:9; 1280 x 720p (59.94/60)16:9; 1920 x 1080i (50)16:9; 1920 x 1080i (59.94/60)16:9; 1920 x 1080p (23.97/24)16:9; 1920 x 1080p (25)16:9; 1920 x 1080p (29.97/30)16:9; 1920 x 1080p (50)16:9; 1920 x 1080p (59.94/60)16:9; 720 x 480p (59.94/60)16:9; 720 x 576p (50)16:9
<b>CONNECTIVITY</b>	
Input Video Analogue	1 x D-sub 15 pin; 1 x S-Video; Composite (BNC); RGBHV for PC and Component/Composite (BNC)
Input Video Digital	1 x DVI-D (with HDCP); 1 x HDMI 1.3 (with HDCP); 1 x DisplayPort (with HDCP)
Input Audio Analogue	2 x Cinch (RCA); 1 x 3,5 mm jack
Input Audio Digital	1x HDMI
Input Control	LAN 100Mbit; remote control wire (3,5mm jack); RS232
Output Video Analogue	Composite (BNC)
Output Video Digital	1 x DisplayPort (with HDCP); 1 x DVI-D (with HDCP)
Output Audio Analogue	3,5mm jack
Output Control	remote control wire (3,5mm jack); RS232
Remote Control	LAN with SNMP; RS-232C (9-pin D-sub) Input and Output; Remote Control IR (internal/external (optional) sensor)
<b>OPTION SLOT</b>	
Slot Technology	Dual Slot (STv1 + STv2); STv2 (compatible with Intel / NEC OPS standard, requires an adaptor)
<b>ELECTRICAL</b>	
Power Consumption on Mode [W]	255 shipping; 410 (max.)
Power Savings Mode [W]	< 0.5 (ECO Standby); < 1
Power Management	VESA DPMS
<b>ENVIRONMENTAL CONDITIONS</b>	
Operating Temperature [°C]	+5 to +40
Operating Humidity [%]	20 to 80
Storage Humidity [%]	10 to 90
Storage Temperature [°C]	-20 to +60
<b>MECHANICAL</b>	
Dimensions (W x H x D) [mm]	Without stand: 1,250.2 x 721 x 125.4
Weight [kg]	Without stand: 40
Bezel Width [mm]	18.5 (left and right); 18.5 (top and bottom)
VESA Mounting [mm]	400 x 400 (FDMI); 4 holes; M6
<b>AVAILABLE OPTIONS</b>	
Option Slot	Built-in PC; CAT 5 receiver; DVB-Tuner; DVI daisy chain board; HD-SDI board; Media Player
Accessories	Feet (ST-5220); Speaker (SP-RM1); Wall mount (WM32-70 L/P); Wall mount (WMS 32-55 L/P)
<b>ADDITIONAL FEATURES</b>	
Colour Versions	Black Front Bezel, Black Back Cabinet
Safety and Ergonomics	CE; TÜV GS; C-tick; FCC Class B; UL/C-UL or CSA; PSB; VCCI; RoHS
Audio	Integrated Speakers (10 W + 10 W); Optional Speakers (15 W + 15 W)
Shipping Content	Display; DVI-D cable; interface cover; Power Cable; Signal Cable DisplayPort; Remote Control; CD-ROM (User Guides/Manuals); CD-ROM with SpectraView Profiler PD software
Warranty	3 years warranty incl. backlight